



BWRDD PARTNERIAETH
RHANBARTHOL
CAERDYDD A'R FRO
CARDIFF & VALE
REGIONAL PARTNERSHIP
BOARD

PARTNERSHIP NEWS

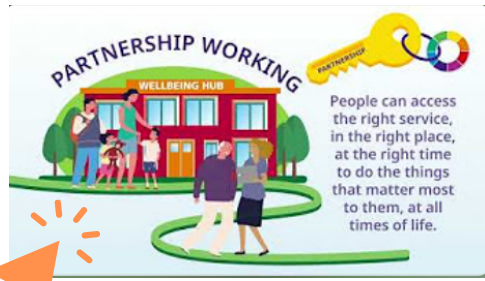


Welcome to the Autumn/Winter edition of the Regional Partnership Board newsletter.

The Regional Partnership Board (RPB) is made up of Cardiff Council, Vale of Glamorgan Council, Cardiff and Vale University Health Board, Welsh Ambulance Services NHS Trust, housing, third & independent sectors and carer representatives.

Our aim is to improve the health and well-being of the population and improve how health and care services are delivered by making sure people get the right support, at the right time, in the right place.

Here you'll find updates on emerging themes, future actions, and collaborative efforts involving health professionals, third-sector organisations, and the public.



BWRDD PARTNERIAETH
RHANBARTHOL
CAERDYDD A'R FRO
CARDIFF & VALE
REGIONAL PARTNERSHIP
BOARD



CELEBRATING SUCCESS

There have been some amazing events:



- Annual Learning Disabilities Conference
 - UHB launches Children and Young People's plan
 - Carers Rights Day 2024
 - Healthy Lifestyle Event
 - Wonderfest
 - Welsh Government RPB Conference
- You can read more about them [here](#).

COMING SOON

Learn about what we have coming up



- Regional Partnership Board Conference - We'd love for our partners to help us plan this event - Please get in touch via Hsc.integration@wales.nhs.uk
- Spread and Scale Academy Applications

LATEST NEWS

Keep abreast of our latest news, service launches, surveys and partner news



- The first 1000 days: PHW Report
- Getting your views on the Autism Code of Practice
- Launch of the Digital Summary Care Viewer
- Llais Cardiff & Vale Open Door Event: Engaging with neurodivergent people, families and carers.
- Help with screening appointments for unpaid carers

RPB & SLG MEETINGS

Regional Partnership Board and Strategic Leadership Group meetings - see highlights and key actions from the latest meetings [here](#).



- @Home Programme: Place Based Planning, Safe@home and Enhanced Community Care
- Winter Plans
- Funding, Performance and 2025-26 budget
- RPB Members Survey.

The Regional Partnership Board is here to ensure that your voice is at the heart of shaping our health and social care services.

If you have any questions about our recent meetings, ongoing projects, or simply want to share your thoughts, don't hesitate to reach out. We're always available to listen and engage with you—whether you're a health professional, third-sector partner, or a member of the public. Let's work together to build a healthier, stronger community!

We hope you enjoyed this newsletter, however, if you wish to opt out of receiving this newsletter, please let us know on hsc.integration@wales.nhs.uk

Connect with us:



View our resources:

